



BLAST DOORS

**CUSTOM, SPECIALTY AND HYBRID PRODUCTS FOR
BUILDING SECURITY AND PHYSICAL PROTECTION**

FROM CONCEPT TO FABRICATION

WE DO THE PROJECTS THAT OTHERS WON'T

*CUSTOM BUILT AND SPECIFICALLY DESIGNED FOR APPLICATIONS WITH UNIQUE
AND COMBINED REQUIREMENTS*

- **Personnel, Production, Vehicle, and Custom Door Applications**
- **Blast Resistant up to 10,000 PSI**
- **Forced Entry and Ballistic Rated**
- **Fragmentation Designs Including Glazing**
- **P.E. Analysis to UFC-3-340-02 or As Specified**
- **Electric, Hydraulic or Pneumatic Latching and/or Operation**
- **Acoustical Construction with Sound Seals**
- **Air and Gas Tight –ASTM E283**
- **Swinging Doors Ship in Frames With All Hardware Installed for Pour-in-Place install, Where Size Permits**

Sliding Doors



Fire Rated Sliding Pressure/Air Tight Hybrid Battery Production Facility



344 PSI Sliding Blast Door - Fragmentation Pneumatically Sealed- Gas Tight Under Full Gas and Shock Phase Load



Blast and Fire Rated Sliding Door with Explosion Proof Operator for Chemical Storage



Curved Pressure Resistant Door STC 50 Acoustical rating

Swinging Doors



270 PSI Blast Door With Air Tight, Chemical Resistant Seals and Sight Hole



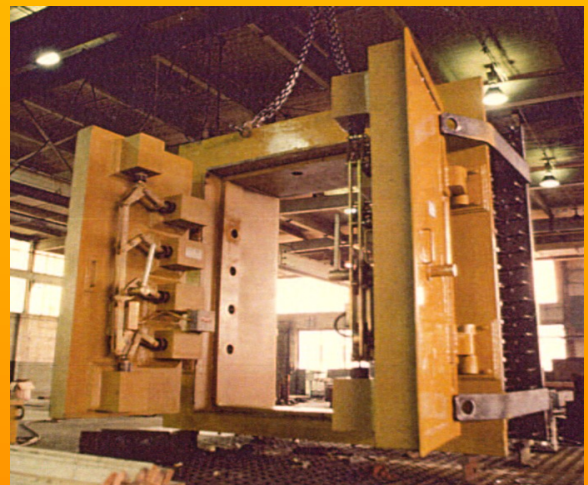
50 PSI, 3 hr Fire Rated Blast Door with Custom Panic Hardware



80 PSI Power Operated Designed for 100% Rebound



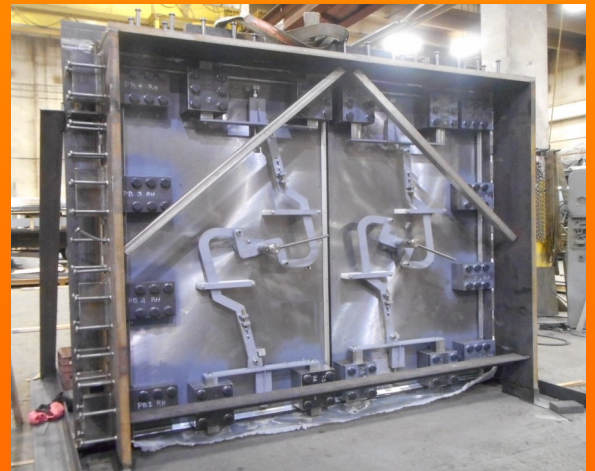
STC 60, Blast and Fragment Resistant Door with Power Operators and Latches



500 PSI, 5" Thick Solid Steel Blast Door Gas Tight, with Chemical Resistant Seals



High Pressure/Vacuum Space Test Facility - Dual Pneumatic Seals and Hydraulic Operation



631 PSI Fragment Resistant, Air Tight, Fully Operable Post Blast Occurrence

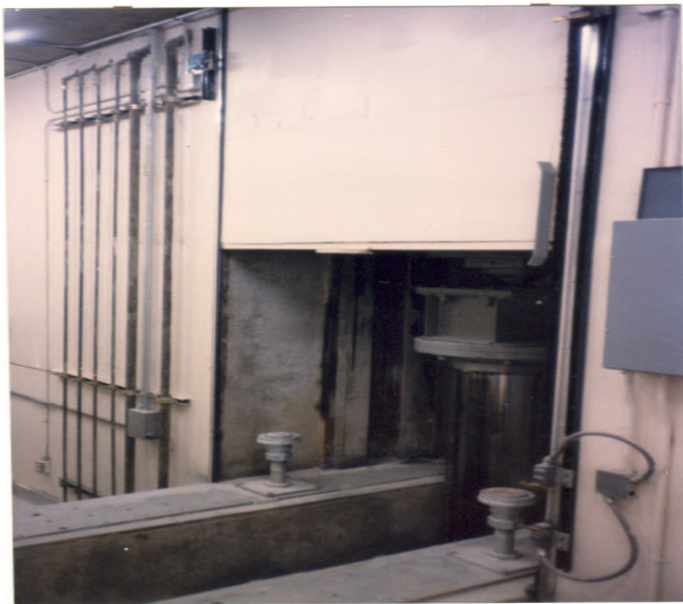
Vertical Lifting Doors



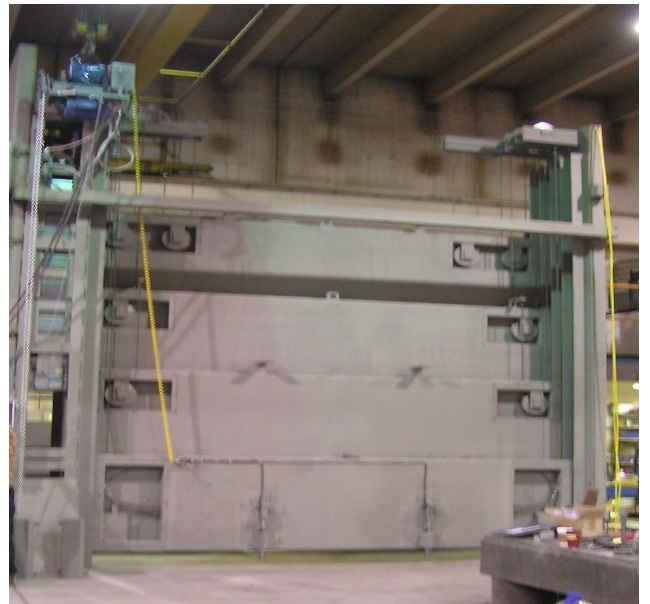
15 PSI Three Panel Vertical Lift , 50 Caliber Ballistic Resistant, K-4 Impact Rated



1 PSI Three Panel Vertical Lifting Fueling Door for Metro Transit System Garage



30 Ton Concrete Vertical Lifting, Hydraulically Operated, Shielding Door



400 PSI Four Panel Vertical Lifting Blast Door for Extremely Low Head Room

Distributed by:

셈이엔티(주) 379-81-00472 서울시 영등포구 양평로22길 21,614호(선유도코오롱디지털타워)
tel 02-2062-5334 mobile 010-9114-7553 uveye@uveye.co.kr



2498 Commercial Drive,
Auburn Hills MI, USA 48326
Main: 248.365.4382
Fax: 248.365.4383
Email: sales@shurestar.com
Web: www.shurestar.com